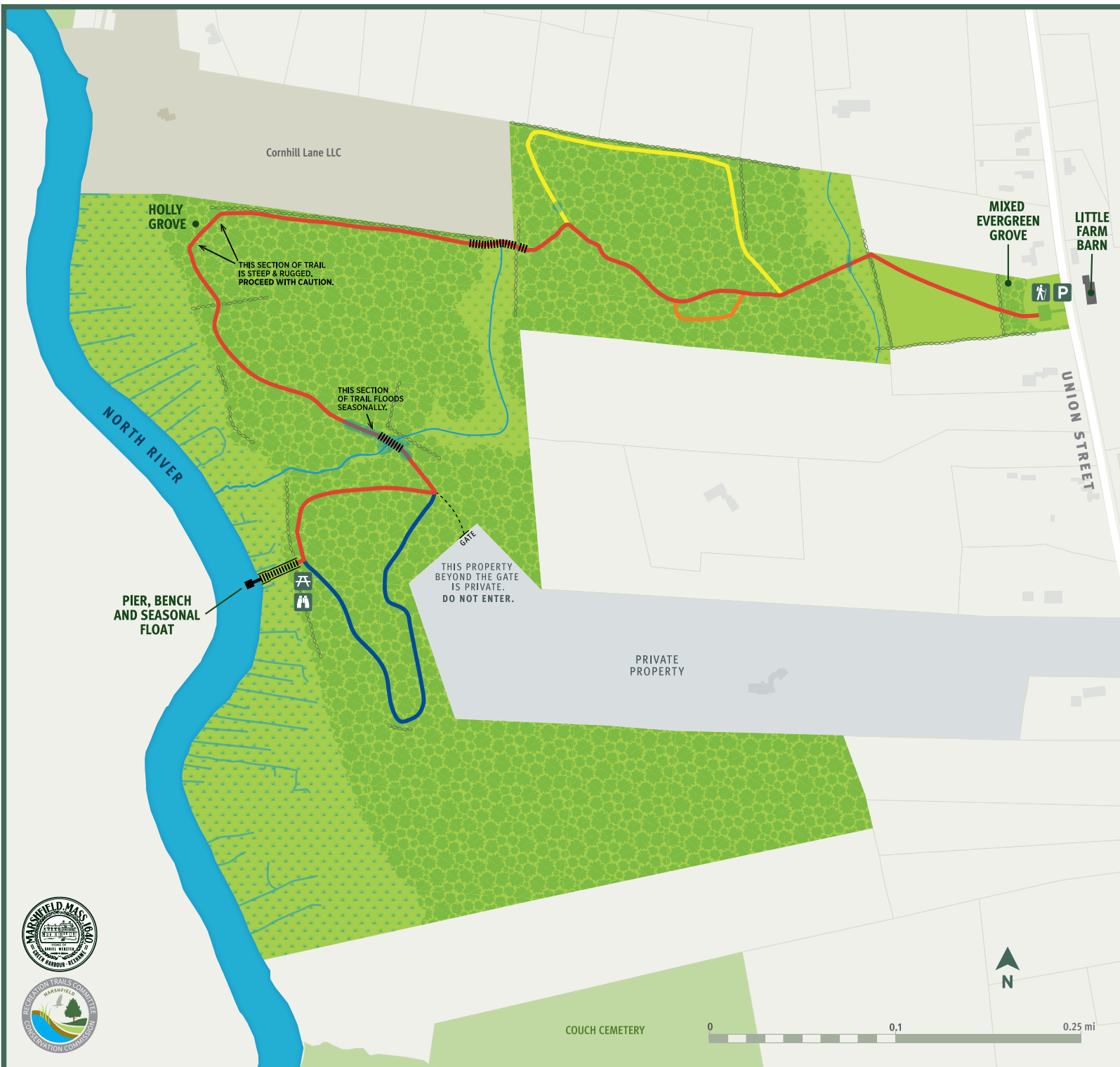
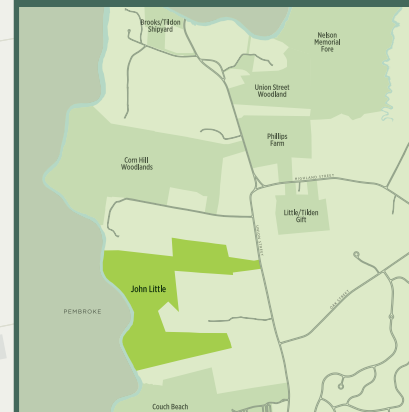


# John Little

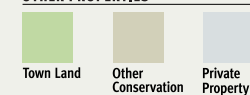
107 acres |  
Stunning views of the North River,  
and a glimpse of  
Marshfield's agricultural past



## JOHN LITTLE



## OTHER PROPERTIES



<span style="color: red;">—</span>	Pier Trail .....	1.03 mi
<span style="color: blue;">—</span>	Overlook Loop .....	0.33 mi
<span style="color: yellow;">—</span>	Little's Loop .....	0.32 mi
<span style="color: orange;">—</span>	Orange Loop .....	350 ft



## TRAIL NOTES

The trail system begins in an open meadow but extends primarily through the woods on a slope overlooking the North River marshes. Occasional boardwalks traverse streams and wetlands.

**Caution: Some trail sections are steep and rugged.** A few areas are seasonally wet and may be impassable in the spring and after periods of heavy rain.

