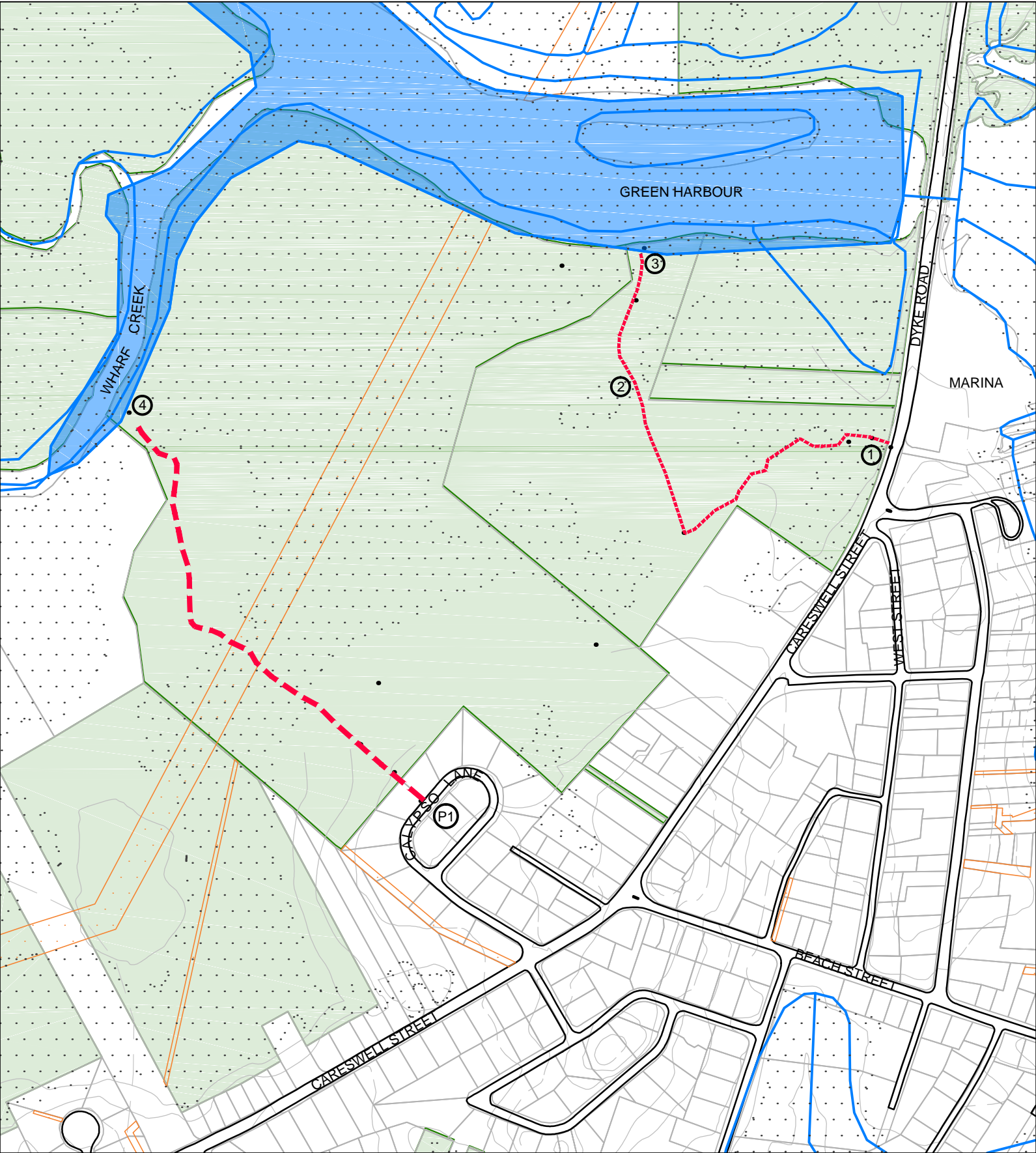


# MARSHFIELD RECREATIONAL TRAILS

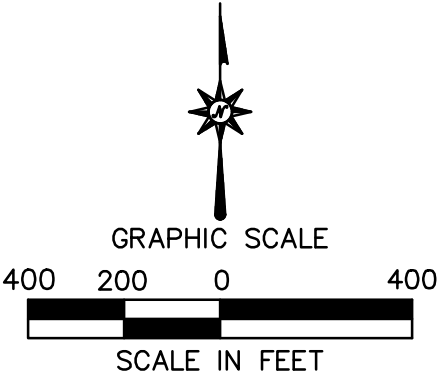
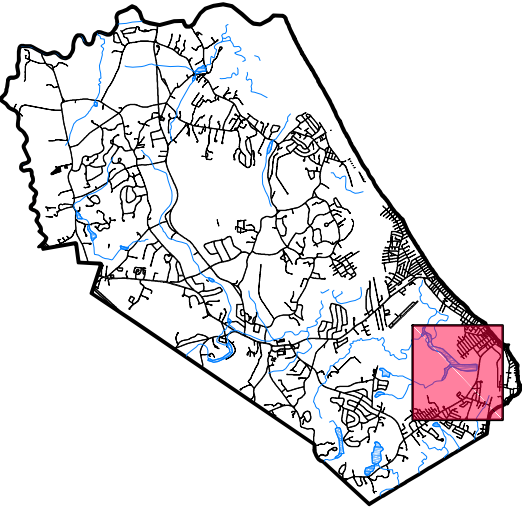
## WHARF CREEK AT CALYPSO LANE AND DYKE ROAD



- MAP KEY**
- ① TRAIL ACCESS OFF DYKE ROAD. NO TRAIL PARKING PERMITTED ACROSS THE STREET.
  - ② TRAIL PASSES THROUGH THICKET.
  - ③ SCENIC VIEW TO GREEN HARBOUR.
  - ④ SCENIC VIEW TO WHARF CREEK.
  - Ⓟ SHOULDER PARKING AT CALYPSO LANE ENTRANCE. DO NOT BLOCK DRIVEWAYS.

- LEGEND**
- TRAIL CLASS I  
NARROW WIDTH, POTENTIAL STEEP AND RUGGED TERRAIN, NONE OR FEW SIGNS
  - TRAIL CLASS II  
MEDIUM WIDTH, MODERATE GRADE, LIMITED TRAIL MARKING
  - TRAIL CLASS III  
BROAD WIDTH, EASY GRADE, WELL-MARKED
  - ROADWAY
  - 30 FT ELEVATION CONTOUR
  - PARCEL BOUNDARY
  - STREAM/WATERWAY
  - WATERBODY
  - EASEMENT
  - WETLANDS
  - OPEN SPACE
  - SCHOOL FACILITY
  - TRAIL PARKING & MAP KEY MARKER

**LOCATION PLAN (TOWN OF MARSHFIELD)**



MAP UPDATED: MAY, 2016

BOUNDARY LINES, WETLAND/WATERBODY LIMITS, AND OTHER INFORMATION PROVIDED ON THESE MAPS ARE APPROXIMATE AND SUBJECT TO CHANGE. WHILE EVERY EFFORT HAS BEEN MADE TO ACCURATELY INVENTORY THE TRAIL SYSTEM AND EXISTING CONDITIONS, ACTUAL CONDITIONS MAY VARY FROM THOSE PRESENTED ON THIS MAP. THE TOWN OF MARSHFIELD AND THE CONTRIBUTORS TO THE CREATION OF THIS MAP TAKE NO RESPONSIBILITY FOR ANY LOSS, DAMAGE, OR INJURY ARISING FROM ANY INACCURACIES IN THIS MAP.

MAP CREATED BY BL COMPANIES, INC.  
BASE INFORMATION PROVIDED BY TOWN OF MARSHFIELD GIS DATA RESOURCES AND OLIVER MASS GIS ONLINE MAPPING TOOL.



# MARSHFIELD RECREATIONAL TRAILS MAP



## WHARF CREEK AT CALYPSO LANE AND DYKE ROAD

### PERMITTED ACTIVITIES

- HIKING
- DOG WALKING
- BIKING
- HORSEBACK RIDING
- NORDIC SKIING

### PROHIBITED ACTIVITIES

- CAMPING
- FIRE
- SMOKING
- CONSUMPTION OF ALCOHOL
- USE OF FIREARMS AND TRAPPING
- USE OF PAINTBALL GUNS
- MOTOR VEHICLES (EXCEPT FOR EMERGENCY OR SERVICE)

NOTE: Exclusion of an activity from these lists does not imply its prohibition. Activities not on the prohibited list and not permitted under Massachusetts or Federal law are also prohibited. Refer to Town of Marshfield Conservation Commission list of Rules and Regulation for up to date information.

### DESCRIPTION

#### LAND DESCRIPTION:

THIS WAS ONCE A SINGLE LOOP TRAIL THAT HAS FALLEN INTO DISREPAIR AND NO LONGER HAS A NAVIGABLE CONNECTION. THE TRAIL IS VERY QUIET, AND LIES ON A PERCHED WOODLAND AT OR JUST ABOVE THE GREEN HARBOR FLOODPLAIN. THERE IS A DENSE UNDERSTORY OF NATIVE CHOKEBERRY THAT CREATES BOTH AN ATTRACTIVE FALL DISPLAY OF ORANGE AND RED, AND AN IMPENETRABLE THICKET. DESPITE BEING A SMALL CONSERVATION PARCEL IN CLOSE PROXIMITY TO TOWN DEVELOPMENT, THERE IS A DISTINCT SENSE OF SOLITUDE AT THIS WOODLAND THAT SOME OF THE MORE THOROUGHLY DEVELOPED AND POPULAR AREAS DO NOT POSSESS. A SEEMINGLY ANCIENT NETWORK STONE WALLS THREAD THEIR WAY THROUGH THE WOODS RECALLING AN AGRICULTURAL HISTORY AT THIS LOCATION.

#### PARKING:

STREET PARKING ON CALYPSO LANE IS PERMITTED. PARKING AT DYKE ROAD AND GREEN HARBOR MARINA IS NOT PERMITTED.



CALYPSO LANE TRAIL ENTRANCE.



TYPICAL TRAIL CONDITIONS.

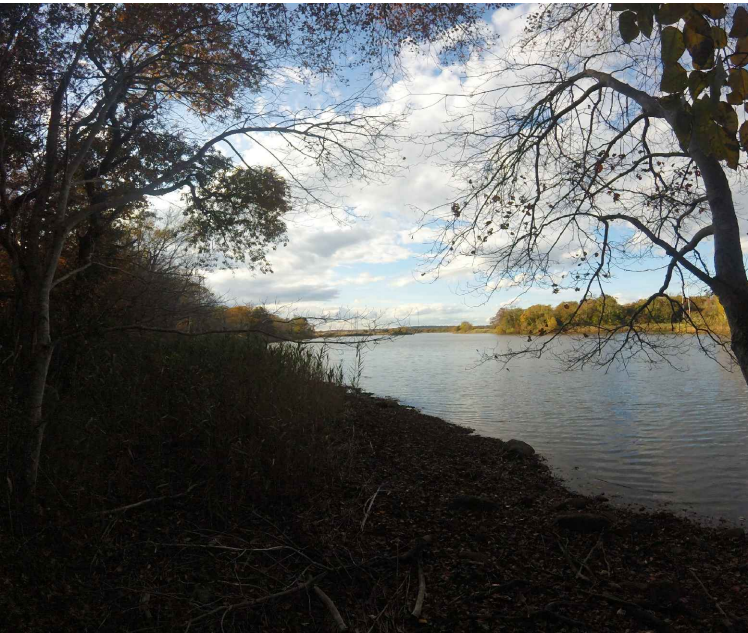
#### MARKINGS AND WAYFINDING:

INTERMITTENT METALLIC TRAIL MARKERS CAN BE FOUND ALONG THE TRAIL

#### DIFFICULTY AND TRAIL LENGTH:

THESE TRAILS ARE EXTREMELY RUGGED AND ONLY VERY ABLE BODIED AND SKILLED NAVIGATORS ARE RECOMMENDED TO USE THEM. USERS ARE STRONGLY ENCOURAGED TO TURN AROUND IF THE TRAIL BECOMES TOO DIFFICULT TO FOLLOW. THE FOLLOWING TRIP TIMES ARE BASED ON AN EASY HIKING SPEED OF BETWEEN 1.0 AND 2.0 MPH:

- TRIP FROM DYKE ROAD TO GREEN HARBOR VIEWING = .3 MILES OR APPROXIMATELY 12 MINUTES.
- TRIP FROM CALYPSO LANE TO WHARF CREEK VIEWING = .3 MILES OR APPROXIMATELY 12 MINUTES.



SCENIC VIEW OF WHARF CREEK.



REMNANTS OF STONE WALL.