



North-South River Reopening Plan

Commonwealth of Massachusetts
Division of Marine Fisheries
Tuesday December 13, 2022

Current Area Classification & Status

Conditionally Approved

MB5.1, North River East
MB6.1, South River North
Current Status - Closed

Seasonally Closed

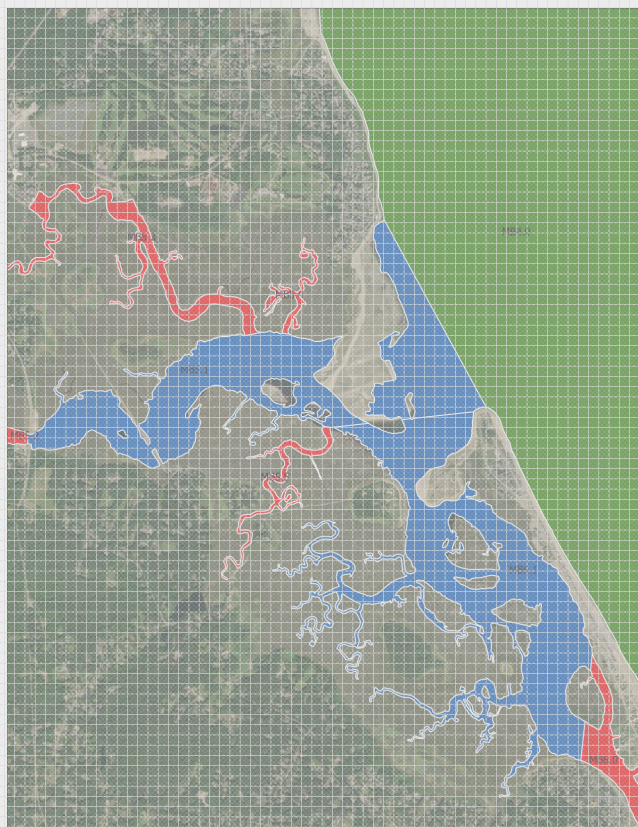
June 1 to October 31

Open
November 1 to May 31

UATE

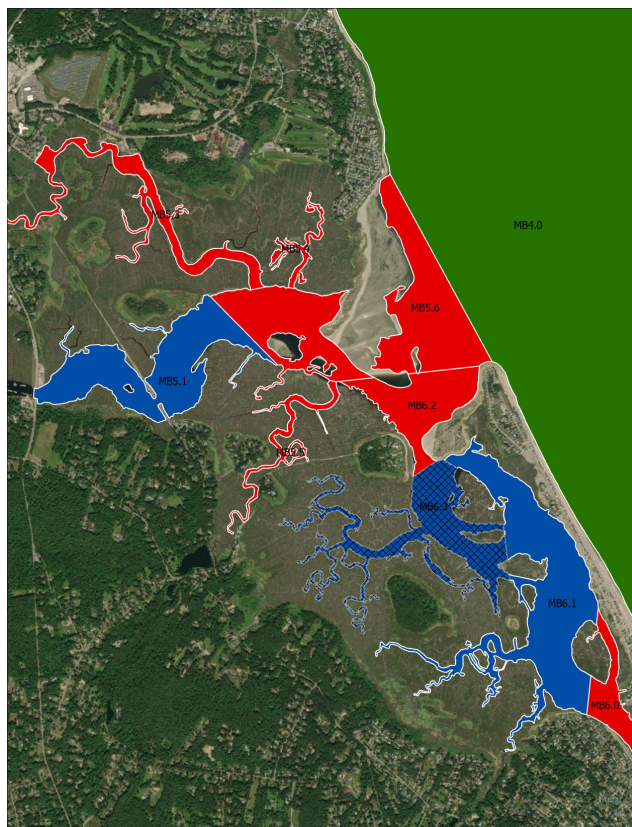


Historic Classification



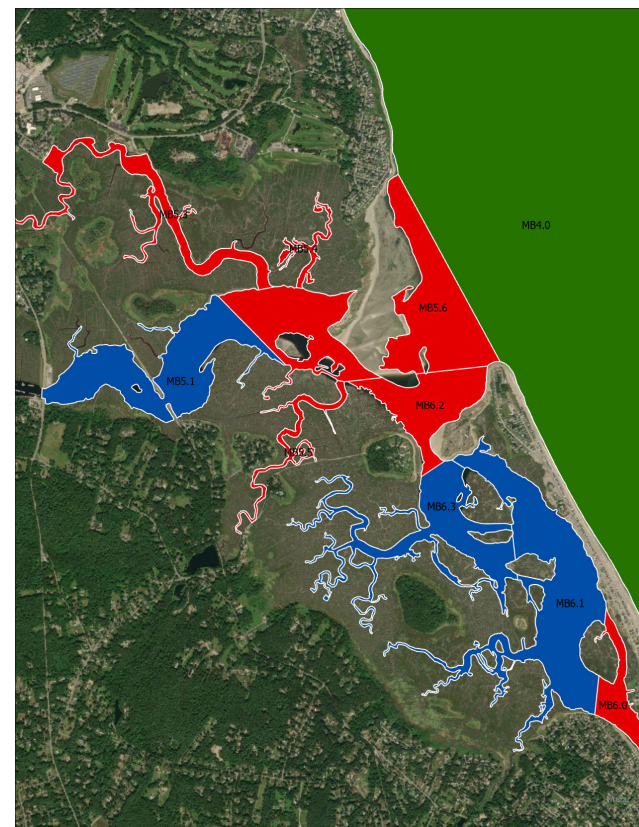
November through May

New Winter Classification



November through February

New Spring Classification



March through May

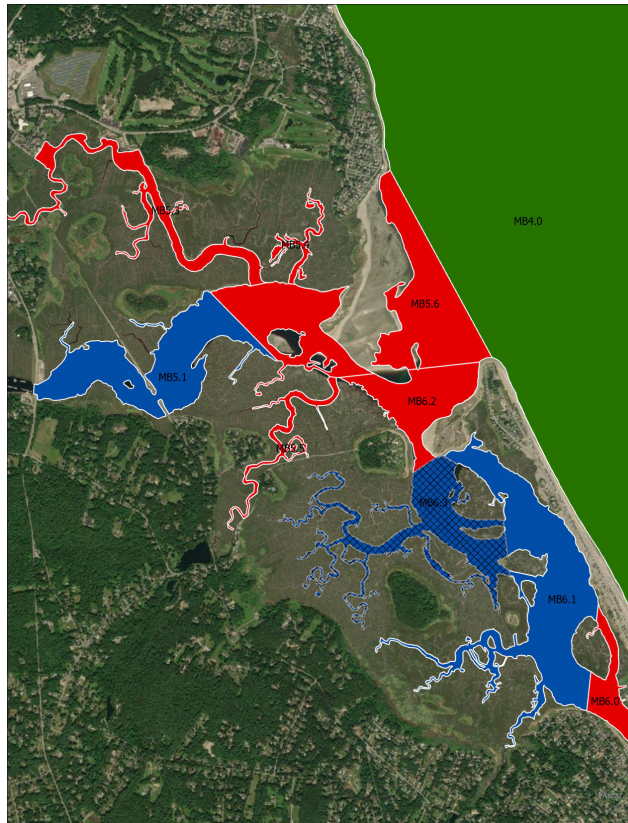
Changes

Blue = Open Nov-May

Blue crosshatch = Open Mar-May

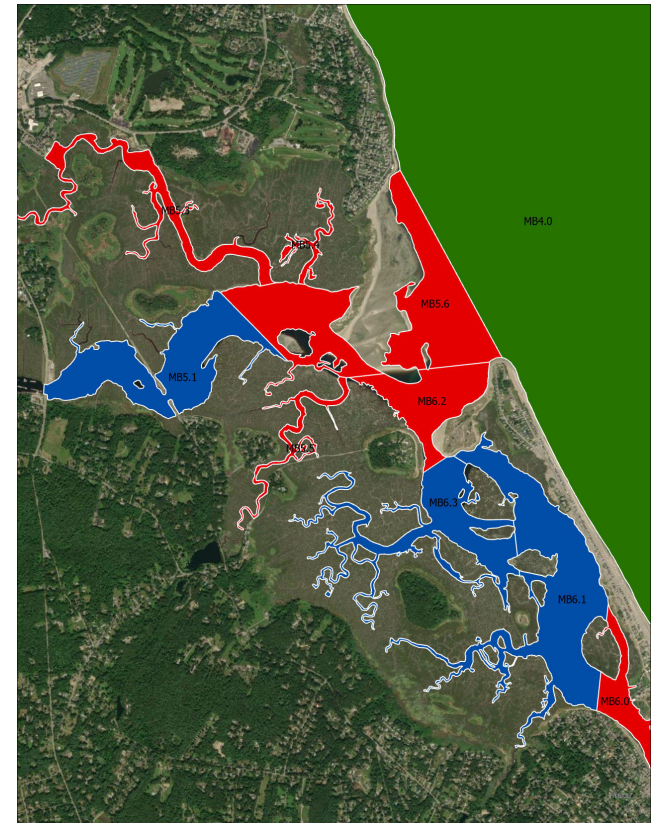
Red = Prohibited/Closed

New Winter Classification

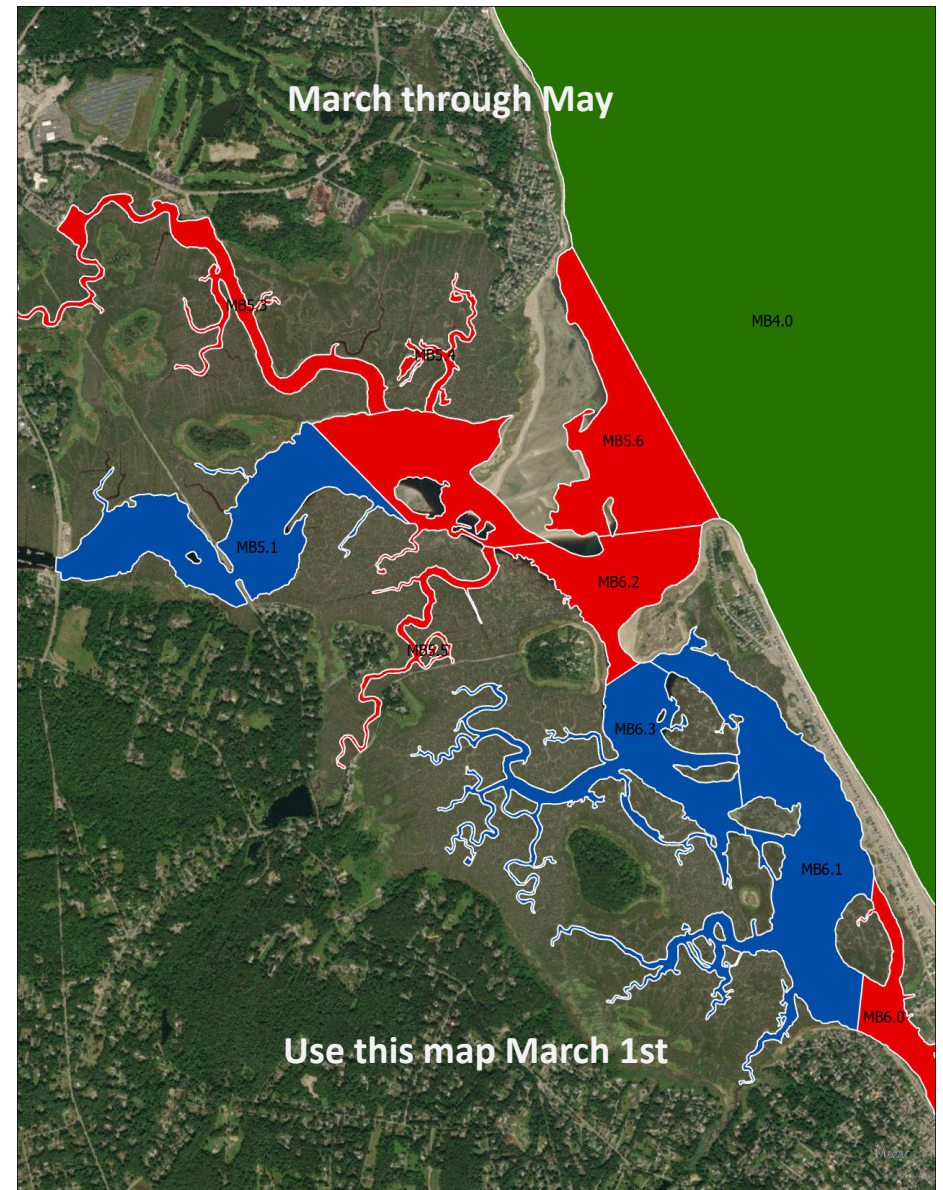
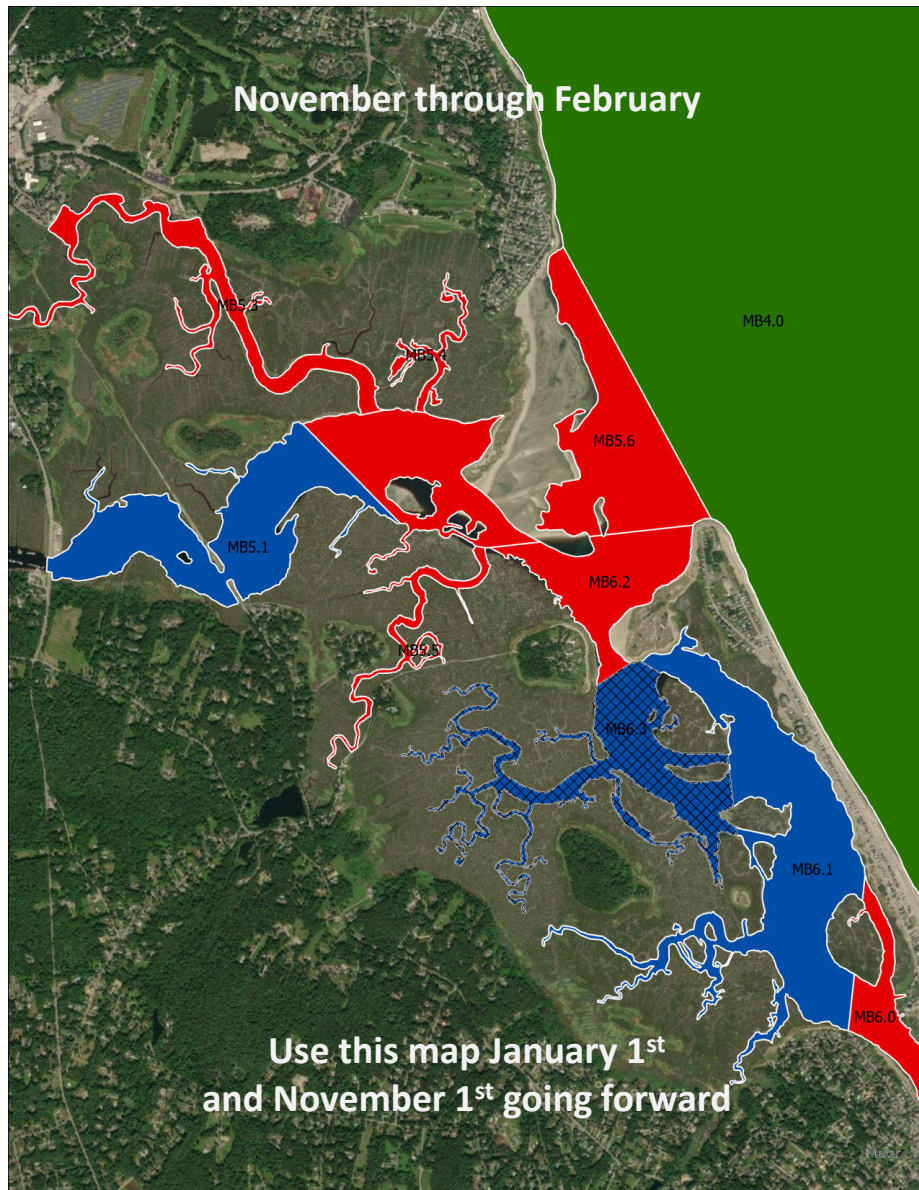


November through February

New Spring Classification



March through May



Acreage Comparisons**

Area	Classification - Status	Acres				
		Historic	New Winter	New Spring		
MB5.1	CA Open	293	CA Open	115	Prohibited Closed	179
MB6.1	CA Open	314	CA Open	162	CA Open	115
MB5.6			Prohibited Closed	179	CA Open	162
MB6.2			Prohibited Closed	59	Prohibited Closed	59
MB6.3			CA Closed	92	CA Open	92
Prohibited or Closed*		0		330		238
Conditionally Approved/Open		607		277		369
				46%		61%

*does not include Prohibited areas MB5.2, MB5.3, MB5.4, MB5.5, or MB6.0

**Acreage totals include intertidal and subtidal waters



Conditional Area Management Plan (CAMP)

WWTP Performance Standards

- Notification to DMF
 - Release from damaged infrastructure (i.e., surcharging manhole)
 - Violation of fecal coliform standards as outlined in NPDES permit
 - Any overflow or discharge of partially treated wastewater to any surface water
 - Use of the fourth secondary clarifier
 - Peak flow exceeds 3.3MG
- Automatic Closure – Notification to Shellfish Constable and DMF
 - Sand filters become clogged
 - Washout of the secondary clarifier
 - Storms with predicted coastal flooding
 - 24 Hr Rainfall >2 inches
 - Partial and Total Bypass or Blending
 - MGD Total exceeds 3.3MG

Municipal Enforcement

- Vehicle Placard
- Area Boundary Signs
- New Regulations
 - Reciprocal Permits Marshfield ↔ Scituate
- Email Notifications (Scituate)
- Phone → Shellfish Constable offices
- Security Cameras



Towns of Marshfield & Scituate Recreational Shellfishing Vehicular Placard



Name: _____

Vehicle Plate Number: _____

Permit #: _____ **Resident or Non-Resident (Circle one)**

Issued by the: Town of Marshfield / Scituate (Circle one)

*Please place placard on dash in a visible location.

** This placard is an added layer of safety while actively shellfishing, this will allow public safety to respond to potential overdue shell fishermen and the need of notification in the event of a shellfish closure while on the clam flats. Please do not display placard if not actively shellfishing.

