

MARSHFIELD RECREATION DEPARTMENT

Summer Programs 2019



RECREATION STAFF

Craig Jameson, Recreation Director

cjameson@townofmarshfield.org

Nancy Bowers, Admin. Assistant

nbowers@townofmarshfield.org

OFFICE HOURS

Monday-Thursday 8:00AM- 3:00PM

Friday 8:00AM-12:30PM

or by appointment.

RECREATION COMMISSION

Gary Pina, Chair

Chris Ciocca

Brian Spano

Steve Darcy

**Coast Guard Hill
900 Ferry Street, Marshfield, MA 02050
781-834-5543**

Like us on FACEBOOK:

www.facebook.com/MarshfieldRecreationDepartment

ONLINE REGISTRATION WEBSITE

https://www.activityreg.com/ClientPage_t1.wcs?clientid=MARSH&siteid=1

TABLE OF CONTENTS

Table of Contents	Page 2	Trips/Outings	
		Greenvale Vineyards-Newport, RI	Page 14
Marshfield Recreation Commission	Page 3	Fabulous Fall In Massachusetts	Page 15
Note from the Director	Page 3	Coast Guard Hill	
		Volleyball	Page 16
Who we are and what we do	Page 4	Wood for Warmth	Page 16
		Community Garden	Page 16
Registration and General Information	Page 5-6	Community Green House	Page 16
		Easter Egg Hunt	Page 17
Extended Day Program (licensed child care)	Page 7	Peter Igo Park	
		Park Updates	Page 18
Pre School Fun		Marshfield Tennis Club	Page 18
Sports Mania Week	Page 8	Canoe & Kayak Rentals	Page 19
Explore Birds & Ocean Animals	Page 8		
Explore Pond Life & Bugs	Page 8	Programs Coming Soon	Page 19
Around the World with Music & Art	Page 8		
Animals, Creatures, & Storybooks	Page 9	Pickleball Tournament	Page 20
Puppet Play	Page 9		
Let's Imagine	Page 9	Marshfield's Farmer's Market Info	Page 21
Youth Activities		Sports Organizations	Page 22
Daniel Webster Playground Camp	Page 10		
IncrediFlix Action Movie Flix	Page 11	Recreation Facilities	Page 22
IncrediFlix Minecraft Movie Flix	Page 11		
Around the World with Art	Page 11	Registration Form	Page 23
Youth Sports Activities			
All Sports Camp	Page 12		
Field Hockey	Page 12		
Youth Wrestling	Page 12		
Youth Sailing Lessons	Page 13		
Summer Track Clinics	Page 13		

MARSHFIELD RECREATION COMMISSION

The Recreation Commission is comprised of Marshfield residents, seven full members and two alternates, who are appointed by the Marshfield Board of Selectmen. The Commission is a policy and active board responsible to the town for providing year-round, high-quality indoor and outdoor recreation activities for town residents. The Commission meets regularly to review policy, programs and procedures. Community attendance and input regarding programs and facilities are welcome! The Recreation Commission welcomes volunteers who are interested in promoting the planning of programs for all Marshfield residents. Call us at (781) 834-5543 to see how you can help!

So what does this really mean and what am I getting my self into? The Commission typically meets one Wednesday night per month. The meetings are scheduled to start at 6:00 p.m. and the goal is to complete all business by or before 7:30 p.m. At times the Commission may meet more often, such as if we attend a Board of Selectmen's meeting, or in preparation for the annual Town Meeting.

Commission members are welcome to help at our special events, such as the annual Easter Egg Hunt, Concerts on the Town Green, and Sand Castle/Sculpture Contest. Commission members may act as a liaison between our board and another town board such as Open Space or Community Preservation Committee. Members may attend a meeting and report back to the commission. Members are often a point of contact for residents as they may offer program suggestions. Members are appointed by the Board of Selectmen, typical terms are for a three year period. We have a good and varied board. Stop by one of the meetings and see us in action.

Interested individuals should forward a letter of interest to:

Board of Selectmen.

Marshfield Town Hall

870 Moraine Street

Marshfield, MA. 02050

NOTE FROM THE DIRECTOR

Hello Everyone,

As we head into our 2019 Summer programs, I would like to remind everyone that community input is very important to the Marshfield Recreation Department! We are always willing to listen to ideas about new programs or ways to improve already existing programs. Our goal is to serve and create various programs for ALL people in the community to participate in. Please stay tuned to what we have going on at the Recreation Department in the upcoming months and LIKE us on Facebook: www.facebook.com/MarshfieldRecreationDepartment.

Sincerely,

Craig Jameson

WHO WE ARE AND WHAT WE DO

- The Marshfield Recreation Department was established by Town Meeting in 1958 with the purpose of conducting and promoting recreation, play, sports, and physical education. The Recreation Department plans, organizes, promotes, and provides worthwhile leisure programs and facilities to serve the physical, emotional, and social needs of the residents of our community, regardless of one's ability.
- The Recreation Commission is comprised of Marshfield residents, seven full members and two alternates, who are appointed by the Marshfield Board of Selectmen. The Commission is both a policy and active board responsible to the town for providing year-round, high-quality indoor and outdoor recreation activities for town residents. The Commission meets regularly to review policy, programs and procedures. Community attendance and input regarding programs and facilities is welcome! The Recreation Commission welcomes volunteers who are interested in promoting the planning of programs for all Marshfield residents. Call us at (781) 834-5543 to see how you can help!

DEPARTMENT OBJECTIVES

- Coordinate recreational activity with the school department, youth groups, youth sports programs, and senior citizens groups.
- Involve as sponsors of recreation special interest groups, business organizations, neighborhood groups, professional groups and news media who are interested in helping improve Marshfield.
- Better utilize and upgrade parks, ball fields, and conservation land.
- Better utilize, protect, preserve, and beautify Marshfield's beaches.
- Set up new programs as self-supporting and explore ways of generating additional revenue through grants, donations and fundraising.

RECREATION STAFF

- Recreation activities are coordinated through our office staff, which is comprised of one full-time director and one part-time administrative assistant.
- The Recreation Department strives to hire the best-qualified individuals possible to staff and instruct our many programs. The Town of Marshfield performs background record checks on paid staff and program volunteers. Our department presently uses job applications, personal interviews and reference checks as part of our screening process. The C.O.R.I. will further assist us in screening prospective employees. In all instances we will do everything possible to provide a positive learning experience and offer a safe, secure environment for your child. The Recreation Department strives to offer community programs which are within budget limitations. All Recreation Department programs are self-supporting. The fees charged for programs cover the cost of operation of the program, such as instructor salaries and materials.
- Program instructors and part-time employees are hired on a seasonal basis. If you are interested in offering a program, please contact our office.

REGISTRATION/GENERAL INFORMATION

REGISTRATION IS ACCEPTED:

MAIL—IN PERSON—ONLINE

Registration Procedure

All fees are payable at the time of registration. Go Green, save time and register on-line. Late registrations pay full fee, no pro-rating. A person is considered registered when payment: including credit or debit card, (Discover or Master Card) or a check (payable to Town of Marshfield), accompanied by a completed registration form is received by the Recreation Department.

Mail/In Person Registration Process

1. If Mail or In Person, use the registration form located on page 18-19
2. Include check or money order payable to Town of Marshfield, to cover all program costs.
3. Fill out registration form completely and accurately so that all your information will be recorded correctly. Read all registration guidelines and course information.
4. **Mail:** Insert completed registration form and check into an envelope and mail to:
Marshfield Recreation Department
900 Ferry Street
Marshfield, MA, 02050
5. Please provide a current e-mail address for confirmations/receipts.

Online Registration Process

Go To:

1. www.marshfield-ma.gov
2. Select Recreation Department under "Government" on top of page
3. Select "Online Registration for Programs" on left hand side

If you registered online with us previously we have your email address in the system and you already have an account. If you forget your password, enter the e-mail you have on your account and click "I forgot or don't know my password". A temporary password will be emailed to that address. Once you are logged in, click "Account" at the top of the page to review and edit all your account information.

If you are new, you will need to "Create a New Account" Click "login" from the upper right top corner of the page. On the next page click "I would like to create a new account" Enter all the data for Parent/ Guardian 1, Click "Save and Continue" when completed. Click "Add New Member" and enter the data for Parent /Guardian 2. Click and save and then enter the next person in the family. Continue until you have entered each family member. Once you have all family members entered you will then be able to register for programs. Your account will allow you to view your account information which will show contact information, balance, and credits. You will be able to add new members, edit your contact information, view the activities you are registered for or use credit vouchers on your account to pay.

WE ENCOURAGE ONLINE REGISTRATION!

SOMETHING FOR EVERYONE!

The Marshfield Recreation Department offers programs, trips and special events year round. Our Community Online Brochure is published seasonally and provides information on our Fall, Winter, Spring and Summer programs. Save time and Go Green by registering for programs on-line! To locate the brochure on our web-site, google Marshfield Recreation. Additional program information is published in the Patriot Ledger, and Marshfield Mariner. We use school notices, and post information at Shaw's, Denny's Barber Shop and Ventress Memorial Library the Senior Link, and Town Hall.

VOLUNTEERS / INTERNS

Volunteers assist in the office and may help with phone calls, program inquiries, marketing, fundraising and the business aspects of the department. Our site at Coast Guard Hill has many outdoor opportunities for volunteers, including gardening, masonry, landscaping, grass trimming, etc. Consider sharing your time, skills and knowledge with your local recreation department. A few hours a week can make a difference! Students seeking community service hours or community groups/organizations or individuals are encouraged to discuss how they may improve community programs/facilities through partnerships.

One person *can* make a difference — *you* can make a difference!!

DON'T LET A GOOD PROGRAM DIE!

Nothing kills a good program better than putting off registration until the last minute. All Recreation Department programs require a minimum number of participants to run successfully. Our programs require a high level of coordination including facility scheduling, staffing, and volunteer recruitment. Undersubscribed programs will be cancelled, but you will receive a full refund. So don't procrastinate — participate!

GIFT CERTIFICATES AVAILABLE!

Can't think of what to get that person who has it all? "Give the gift of recreation" Recreation Department gift certificates are perfect for birthdays, holidays, or any occasion. Call us at (781) 834-5543 and we will design a certificate to meet your needs.

PROGRAM UPDATES!

Any changes to the brochure, including updates to our spring offerings (dates, times, cost, etc.) will be posted to the website. As always, if you have any questions, please do not hesitate to contact us at the office.

E-MAIL LIST!

Join our e-mail list and receive up-to-date information on programs, registrations, jobs and other important news. In your household account select Opt-In. It is easy to subscribe, you will stay current with latest events and best of all it is FREE!

AFTER HOURS?

Stop by our office when staff are not in, on your way home from work, or on a weekend? Don't worry, you can drop off your program payments and/or registration fee or other paperwork in the drop box 24/7, located adjacent to the front door!

RETURNED CHECKS

Please note: There is a charge of \$35.00 for any returned check.

MARSHFIELD RECREATION EXTENDED DAY PROGRAM

Licensed by the Department of Early Education and Care

WHO: Boys and Girls, Grades K-5

WHEN: 2019-2020 School Year

WHERE: Martinson Elementary School & Daniel Webster School

FEES: \$35.00 per student one time Registration Fee plus your Monthly Fee (see below)

CURRENTLY ENROLLED STUDENT REGISTRATION BEGINS:

MONDAY, MAY 20, 2019

- Registration can be done in person at the Recreation Office, 900 Ferry Street-Coast Guard Hill, during business hours.
- Recreation Staff will be at Martinson on dates TBD for those who want to register when they pick their child up. These dates will be sent out in the near future.

NEW STUDENTS REGISTRATION BEGINS:

MONDAY, JUNE 10, 2019

- Register in person at the Recreation Office, 900 Ferry Street– Coast Guard Hill starting at 8:30AM

IMPORTANT INFORMATION FOR 2019-2020 SCHOOL YEAR

- **Daniel Webster School Program Site:** Daniel Webster, Governor Winslow, and Eames Way Students will attend the program at DWS because they are all late schools for the 2019-2020 school year.
- **Martinson Elementary School Program Site:** Martinson and South River students will attend the program at MES because they are both early schools for the 2019-2020 school year.
- Both sites are Licensed by The Department of Early Education and Care, for Marshfield students in grades K-5. The programs operate during the school year, (including early Thursdays) from school dismissal until 6:00 p.m., from the first day of school until the last full day of school.
- Students who attend off site schools are transported via Totman Enterprise Transportation Company from their elementary school to our program sites at Martinson and Daniel Webster.

MONTHLY FEES

One day a week	\$113.00 /month (\$123.00 for Thursdays)
Two days a week	\$226.00/month (\$236.00 if Thursday is included)
Three days a week	\$236.00/month (\$246.00 if Thursday is included)
Four days a week	\$255.00/month (\$265.00 if Thursday is included)
Five days a week	\$285.00/month

Additional Info:

- School year activities include: monthly newsletter, theme months, homework assistance, arts & crafts, sports, table games, group activities, theatre, sewing, outdoor and indoor time, special events and student choice.
- **STAFF:** Supervised by experienced individuals, (many former preschool/school teachers) who meet or exceed EEC requirements. High School, college students, School Tutors/Aides and older, certified in CPR and First Aid. Staff: student ratio not to exceed 1:13.
- We always look for additional fun and engaging staff for substitute positions. Site Coordinator, Group Leader, Assistant Leader positions **ARE AVAILABLE!**

PRE SCHOOL FUN

SPORTS MANIA WEEK



WHO: Children Ages 3-6

WHEN: Monday, June 24th -
Friday, June 28th

9:00AM-12:00PM

WHERE: Recreation Center-
900 Ferry Street

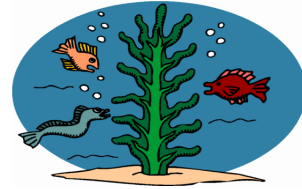
FEE: \$150.00

STAFF: Marshfield Recreation Staff with childcare experience and a sports background will run this program.

PROGRAM INFO:

Activities will include soccer, t-ball, tag games, parachute, obstacle course, and much more! Please send your child with a peanut free snack, lunch, and water bottle. Children will be able to refill water bottle at the program.

EXPLORE BIRDS & OCEAN CREATURES



WHO: Ages 3-6

WHEN: Monday, July 8th—Friday, July 12th
9:00AM-12:00PM

WHERE: Recreation Center - 900 Ferry Street

FEE: \$150.00 per child

STAFF: Ms. Kay Bilas, Lead Teacher for Pudding Hill Pre-School and Recreation Department Site Coordinator at the Martinson Extended Day Program, along with friendly guest staff and volunteers.

PROGRAM INFO: Children will enjoy rhythm, songs, special creature snacks, and creative play as Pirates and Treasure Hunters. We will explore bird sounds and habitats. Children should bring a healthy, peanut-free snack, drink and sneakers! Students must be toilet trained. Pre-school experience preferred.

EXPLORE POND LIFE & BUGS



WHO: Ages 3-6

WHEN: Monday, July 15th— Friday, July 19th
9:00AM-12:00PM

WHERE: Recreation Center - 900 Ferry Street

FEE: \$150.00 per child

STAFF: Ms. Kay Bilas, Lead Teacher for Pudding Hill Pre-School and Recreation Department Site Coordinator at the Martinson Extended Day Program, along with friendly guest staff and volunteers.

PROGRAM INFO Learn about the life cycle of frogs, make pond creatures, go on a bug hunt, enjoy songs, finger play, and stories! Creative play as Kings and Queens, and the Great, Great West. Children should bring a healthy, peanut-free snack, drink and sneakers! Students must be toilet trained. Pre-school experience preferred.

AROUND THE WORLD WITH ART & MUSIC



WHO: Ages 3-6

WHEN: Monday, July 22nd— Friday, July 26th
9:00PM-12:00PM

WHERE: Recreation Center- 900 Ferry Street

FEE: \$150.00 per person

STAFF: Nicole Craven, owner of Sing Explore Create, along with additional staff and volunteers.

PROGRAM INFO: Children will enjoy a week of various music activities and art projects related to different cultures and countries. Each day there will be a different project, story time, and outdoor play. Please be sure to send your child with a PEANUT FREE snack/lunch, water or juice, and sunscreen. Children will be able to fill up their water bottles at the program.

ART & MUSIC WITH ANIMALS, CREATURES, & STORYBOOKS



WHO: Ages 3-6

WHEN: Monday, July 29th—Friday, August 2nd
9:00AM-12:00PM

WHERE: Recreation Center, 900 Ferry Street

FEE: \$150.00 per person

STAFF: Nicole Craven, owner of Sing Explore Create, along with additional staff and volunteers

Children will enjoy a week of various music activities and art projects related to different animals, creatures, and storybooks. Each day there will be a different project, story time, and outdoor play. Please be sure to send your child with a PEANUT FREE snack/lunch, water or juice, and sunscreen. Children will be able to fill up their water bottles at the program.

PUPPET PLAY!



WHO: Ages 3-6

WHEN: Monday, August 5th—Friday August 9th
9:00AM-12:00PM

WHERE: Recreation Center - 900 Ferry Street

FEE: \$150.00 per person

STAFF: Ms. Kay Bilas, Lead Teacher for Pudding Hill Pre-School and Recreation Department Site Coordinator at the Martinson Extended Day Program, along with college aged staff and volunteers.

DESCRIPTION:

Children will enjoy various projects and activities in a fun and safe atmosphere! These projects and activities include paper mache and paper bag puppets, songs and story time, creating rainbows and rain clouds, and outdoor play time! The children will also create a puppet scavenger hunt and go on a hike through the trail at Coast Guard Hill!



LET'S IMAGINE!

WHO: Ages 3-6

WHEN: Monday, August 12th—Friday August 16th
9:00AM-12:00PM

WHERE: Recreation Center - 900 Ferry Street

FEE: \$150.00 per person

STAFF: Ms. Kay Bilas, Lead Teacher for Pudding Hill Pre-School and Recreation Department Site Coordinator at the Martinson Extended Day Program, along with college aged staff and volunteers.

DESCRIPTION:

Children will enjoy various activities through using their imagination in a fun and safe atmosphere! We will do activities that include learning about the movement of water, measuring & weighing liquids, and observing solids. In addition to these projects, the children will participate in outdoor play activities and go on hiking adventures to observe the nature at Coast Guard Hill!



YOUTH ACTIVITIES

DANIEL WEBSTER PLAYGROUND

WHO: Co-ed, ages 5 - 11, (Must be 5 years old by June 24)

WHEN: Monday - Friday, 9:00am- 12:00pm (After Care 12-2pm)

Session 1: June 24-28 (Rexhame Beach)

Session 2: July 8-12(Bowling)

Session 3: July 15-19 (Rexhame Beach)

Session 4: July 22-26 (Bowling)

Session 5: July 29-August 2 (Rexhame Beach)

Session 6: August 5-9 (Bowling)

Session 7: August 12-16 (Rexhame Beach)

*Field Trip every Wednesday to either Rexhame Beach or Alley Kat Lanes in Kingston, MA

WHERE: Daniel Webster School

FEE: \$120.00 per person for 1 week session (9:00am - 12:00pm)

\$50.00 per person for 1 week After Care (12:00pm - 2:00pm)

OUR PLAYGROUND STAFF: are certified in CPR and First Aid.

Staff includes high school and college staff. Many of the staff are former playground participants. Staff/student ratio not to exceed 1 to 10. Eager and fun volunteers (age 13-15) assist staff and students with daily activities.

FOOD: Each child brings his/her own healthy Peanut-FREE lunch/drink/snack. Please send your child with a water bottle, they can refill at camp.

ACTIVITIES: A daily schedule of planned activities will be offered, rain or shine each day. The schedule will include both active and quiet games, sports and crafts. Each session will offer special events, theme days, weekly Wednesday field trip, and Friday pizza day. Limited to 40 campers per session.



IncrediFlix

MOVIE MAKING

WHO: Co-Ed Ages 7 - 13

WHEN: Monday, June 24th - Friday, June 28th

-Action Movie Flix: 9:00am-12:00pm

-Minecraft Movie Flix: 1:00pm-4:00pm

-Action Movie & Minecraft Movie Flix: 9:00am-4:00pm (Full Day)

-After Care: 4:00pm-5:00pm



WHERE: Library Plaza Marshfield Recreation Space 15 Library Plaza, Marshfield, MA 02050

FEES & PROGRAM DESCRIPTION: Action Movie Flix: \$185.00

Use green screen, camera tricks, & special FX to create an action-packed live-action adventure movie!

Collaborate with your group as you write, act, & direct in this INCREDIbly exciting camp where you'll be taught Hollywood stunts to thrill the entire audience. *Flix downloadable within a month after camp ends.

Minecraft Movie Flix: \$185.00

Kids love Minecraft! And new for 2019, more set design features like flowing lava-rivers and flickering torches! Using stop-motion animation students will bring Steve, Alex, the creepers, and more to life in a movie they'll storyboard, shoot and voice-over in age-appropriate groups.

Action Movie & Minecraft Movie Flix: \$335.00 (Full Day)

For this full day class students will participate in Action Movie Flix in the mornings and Minecraft Movie Flix in the afternoons (please see half day descriptions).

After Care: \$35.00

Parents have the option to have their child stay at the program for an extra hour, until 5:00pm. Children will take this time to have a snack and play or continue working on projects!

INSTRUCTORS: IncrediFlix Staff (Fully background checked and CPR/First AID Certified)

For more information on these programs, please visit (www.IncrediFlix.com)

AROUND THE WORLD WITH ART

WHO: Co-Ed, ages 7 - 12

WHEN: Monday, August 12th-Friday, August 16th

9:00 am-12:00pm

WHERE: Recreation Library Plaza Space (15 Library Plz, Marshfield, MA 02050)

FEE: \$150.00 per person

STAFF: Sing, Explore, Create Staff

PROGRAM INFO:

Enjoy a week art based on fun summer themes. Children explore a variety of art mediums and hands-on projects. Children will have the opportunity paint, color, and use their imagination to create their own artwork. The week will end with a short showcase to share the children's artwork! Please bring a healthy, peanut-free snack along with a water bottle or juice box and a smile!



YOUTH SPORTS ACTIVITIES

ALL SPORTS CAMP WEEKS

WHO: Co-Ed, entering grades 1-5 Sept. 2019

WHEN: Monday- Friday, 9:00am - 12:00pm

Session 1: June 24th-28th

Session 2: July 22nd-26th

Session 3: July 29th-August 2nd

Session 4: TBD

WHERE: Session 1-3-Marshfield High School Gym & Fields /
Session 4-TBD

FEE: \$150.00 per person

DESCRIPTION:

A week of the games you love to play: flag football, soccer, basketball, capture the flag, kickball, speed cup stacking, parachute and more! A variety of large group games will be played each day. Staff will stress good sportsmanship and fair play, while exposing students to new games. Wear sneakers. Bring plenty to drink, a healthy snack, sunscreen and lots of positive energy!

***This is a peanut-free site ***

Staff: Mr. Rick Wheaton- (Martinson Elementary Physical Education Teacher), Mr. Rick Fredricks- (Marshfield High School Basketball & Field Hockey Coach), and various part-time sports staff and volunteers!



FIELD HOCKEY



WHO: Girls, entering 5th-9th Grade

WHEN: Monday, August 5th - Thursday, August 8th (4 days) 9:00 a.m. to 12:00 p.m. (Friday, August 9th- Rain Day Make Up If Needed)

WHERE: (TBD Community Turf Field or HS Stadium)

FEE: \$125.00 per person

STAFF: Mr. Rick Fredericks, MHS Varsity Field Hockey Coach, along with several varsity players.

PROGRAM INFO:

During these clinics the staff will stress the fundamentals of Field Hockey including ball handling, shooting and passing. The clinic is geared to beginner and intermediate players with an emphasis on fun and skill development. Remember to bring a healthy, peanut-free snack and drink. Players should protect themselves by applying sun block before practice. If rain cancels, make - up will be Friday. Mouth guards are required, bring a stick if you have one, a limited supply will be available.

YOUTH WRESTLING

WHO: Co-Ed, entering K-8 Grade

WHEN: Tuesdays, July 2nd—August 6th (No program July 16th)

K-4th Grade: 5:00-6:00pm

5th-8th Grade: 6:00-7:00pm

WHERE: Library Plaza Recreation Space, (15 Library Plaza, Marshfield)

FEE: \$55.00 per person

STAFF: Mr. Brian Robinson, Scituate Middle School Teacher, Assistant High School Wrestling Coach, and Coach of the Scituate Youth Wrestling Program. Assistant Coaches will be current members and or alumni of the Marshfield High School Wrestling team.

PROGRAM DETAILS:

Students will learn a fun sport which is truly the purest form of athletics while developing quicker reaction times, competitiveness, physical fitness & mental toughness - skills that will help them improve in all sports. Wrestling is a sport that everyone in the world can understand and be successful at, no matter their body type. Wrestlers will be separated according to age, size & ability. Each session will build upon the last and each session's students will go home learning a new skill and having had a great time. Students should wear a clean t-shirt, shorts, and socks. Remember to bring a water bottle with you.



YOUTH SAILING LESSONS

WHO: Co-Ed ages 7-14, limited space in each class

WEEK 1	July 1,2,3, & 5	9:00am - 12:00pm	1:00pm- 4:00pm
WEEK 2	July 8-11	9:00am - 12:00pm	1:00pm- 4:00pm
WEEK 3	July 15-18	Camp 9:00am-4:00pm	
WEEK 4	July 22-25	9:00am - 12:00pm	1:00pm- 4:00pm
WEEK 5	July 29-Aug 1	9:00am - 12:00pm	1:00pm- 4:00pm
WEEK 6	Aug 5-8	Camp 9:00am-4:00pm	



WHERE: Green Harbor Yacht Club

FEE: AM or PM Session: \$140.00 per person / All Day Camp Weeks \$280.00 per person

****Please note-**AM and PM session are separate. Supervision on children between 12-1pm is NOT part of the program for half day sessions**

PROGRAM INFO: All participants must be able to swim 100 yards wearing a personal floatation device (PFD). Sneakers or boat shoes are required, bathing suit/nylon shorts recommended as you may get wet. Students provide their own United States Coast Guard approved PFD, (class III in good condition), along with a whistle and lanyard attached to your PFD. All staff and students shall wear a PFD while participating in the sailing program. Each boat, (Flying Scott) will have 1 instructor and up to 4-5 students. Cool drinks (water), hat, and sunscreen are recommended. Classes will meet on all scheduled days. In the event of inclement weather, land instruction will be offered with demo boats. If two or more on-water classes are cancelled due to weather, instructor (s) will arrange make-up day.

Check In & Departure: Parent/guardian will drop off their sailor to the staff at the Sailing Barn at the beginning of class. Staff will dismiss sailors to parent/guardian from the Sailing Barn at the end of class. Staff will be available at this time to discuss sail-or ability as well as any important class news.

Beginner: Student who is new to the GHYC Sailing Program. Instruction includes: basic boat & sails, running rigging, crew responsibility, safety on the water, boarding a boat, sailing checklist, exercises, limited tiller time and ending the sail. **Intermedi-ate:** Student who has taken beginner class before with the GHYC. Instruction includes: basic boat & sails, running, rigging, crew responsibility, boarding a boat, sailing checklist, exercises, and ending the sail with some of the advanced instructions. **Ad-vanced:** Includes basic sailing techniques, sail trim, reading the wind, apparent and true wind, points of the sail, communica-tions, stopping the boat, sailing a triangular course, rescue, man overboard, and sailing in confined waters.

Sail ALL Day Camps: During the weeks of July 15-18 & August 5-8 students will sail in the morning, stop for a brown bag lunch, (student provides a healthy, peanut-free lunch and drink) read sailing material, rest up or perhaps play a staff led game and then sail again in the afternoon. Bring a change of clothing, towel and or extra clothes depending on weather.

SUMMER TRACK CLINICS

WHO: Co-Ed, Entering Grades 1-6

WHEN: Monday-Thursday: 9:00AM-11:00AM *Fridays are makeup days if there is a rainout

Session 1: Monday, July 8 - Thursday, July 11

Session 2: Monday, July 15 - Thursday, July 18

Session 3: Monday, July 22 - Thursday, July 25

Session 4: Monday, July 29 - Thursday, August 1

WHERE: Community Track (behind the Martinson Elementary School)

FEE: \$85.00 p.p.

STAFF: Marshfield Recreation Staff with Track & Field Experience

Runners should plan to bring a water bottle, sneakers and a healthy Peanut Free snack. Hats, sunblock, and sun glasses are recommended. Sign up for one or more weeks!!!



TRIPS



WALKING INTENSITY-- HEAVY



Travel arrangements through:
**CELEBRATION
TOURS II**

500 Victory Rd., Marina Bay
Quincy, MA 02171
PHONE: 617-696-1900
FAX: 617-479-7940
www.celebrationtours2.com

Like us on Facebook!



Marshfield Recreation Department presents **Greenvale Vineyards!** August 18, 2019 (Sunday) *Delicious brunch! Wine tasting! Shopping!*

Greenvale is a farm that has been in the same family since 1863. They produce about 3,500 cases of wine annually from their 27 acres of grapes! Greenvale is committed to maintaining this cultural resource and has strived to make their estate a wonderful destination for visitors. Come enjoy an amazing day in Newport including a fantastic brunch buffet at the Atlantic Resort Newport, shopping along the picturesque waterfront, and a fabulous wine tasting to wrap it all up!

Tour includes:

- Round-trip, air-conditioned motorcoach transportation.
- Celebration Tours II tour director. Refreshments included along the way.
**Estimated time of departure: 9:00 am Estimated return time: 7:00 pm*
**You will be notified of exact itinerary a week prior to trips departure. Due to working with other communities, times are subject to change.*
- Brunch buffet at the Atlantic Resort Newport.
- Wine tasting at the Greenvale Vineyards in Newport, Rhode Island.
- Time for shopping on Newport's beautiful waterfront district.
- Gratuities for all tour features, except driver and tour director.

Tour inclusions and details may be subject to change in case of unforeseen circumstances.

Tour Cost Per Person: \$104.00

To book, contact Marshfield Recreation Department: 781-834-5543

www.marshfield-ma.gov

Cancellation Waiver Fee—\$10pp: Protects in case of cancellation for any reason, provided office is notified by no later than 48 hours before departure. Waiver fee must be included with deposit at time of reservation. Waiver is non-refundable, non-transferable and valid for specified applicant/tour only.

RESERVATION FORM—GREENVALE VINEYARDS

Return to: Marshfield Recreation Department
900 Ferry Street
Marshfield, MA 02050

August 18, 2019

Enclosed please find \$_____ per person as payment in full for _____ person(s). Cancellations received until 16 days prior to departure—\$25pp fee. No refunds for cancellations received less than 16 days before departure. Please note health or mobility restrictions; if you require physical assistance, you must travel with a companion who will help you. Please make checks payable to: **CELEBRATION TOURS II**.

Name: _____ Home Phone: _____ Cell: _____

Address: _____ City: _____ State: _____ Zip: _____

Name of Companion: _____ Special Needs?: _____

Emergency Contact: _____ Home: _____ Cell: _____

Waiver Fee: ☐ Yes, \$10pp enclosed ☐ No, Thank You

Please charge \$_____ to my _____ MasterCard _____ VISA. Card number: _____

Expires: _____ Print name as on card: _____ Signature: _____

Billing Address: _____ Phone: _____

* Note: Convenience fee of 3% on all credit/debit card transactions.



Travel arrangements through:
CELEBRATION TOURS II
 500 Victory Rd., Marina Bay
 Quincy, MA 02171
 PHONE: 617-696-1900
 FAX: 617-479-7940
 www.celebrationtours2.com
 Like us on Facebook!

Marshfield Recreation Department presents Fabulous Fall in Massachusetts!

October 13, 2019 (Sunday)

Fall Foliage! Brunch buffet! Red Apple Farm! Smith Cheese Store!

Start the day with a fantastic brunch buffet at the Old Mill Restaurant! Afterwards, enjoy a stop at Red Apple Farm where they've got all the best treats fall has to offer! Our final stop will be at Smith Country Cheese Store where their cows make tons of scrumptious cheeses and dairy products! Come see what western Massachusetts has to offer during this gorgeous time of the year!

Tour includes:

- Round-trip, air-conditioned motorcoach transportation.
- Celebration Tours II tour director. Refreshments served along the way.
**Estimated time of departure: 9:00 am Estimated return time: 7:00 pm*
- Brunch buffet at the King Phillip Restaurant in Phillipston, MA including delicious breakfast and dinner options with carving station and dessert station!
- Stop at Red Apple Farm for their delicious fresh apples. Enjoy the fall BBQ, Brew Barn featuring Moon Hill Brewing company, hayrides, farm animals and their Country Store at the farm! They've got fresh baked treats, cold and hot cider, fresh fudge and an endless assortment of goods and locally-made gifts! Apple picking available on your own at an additional cost of \$6 per 1/4 peck bag of apples.
- Stop at Smith Country Cheese Store to visit their shop packed full of homemade cheeses.
- Gratuities for all tour features, except driver and tour director.

Tour inclusions and details may be subject to change in case of unforeseen circumstances.

Tour Cost Per Person: \$84.00

To book, contact Marshfield Recreation Department: 781-834-5543
www.marshfield-ma.gov

Cancellation Waiver Fee—\$10pp: Protects in case of cancellation for any reason, provided office is notified by no later than 48 hours before departure. Waiver fee must be included with deposit at time of reservation. Waiver is non-refundable, non-transferable and valid for specified applicant/tour only.

RESERVATION FORM—RED APPLE PICKING

Return to: Marshfield Recreation Department
 900 Ferry Street
 Marshfield, MA 02050

October 13, 2019

Enclosed please find \$_____ per person as payment in full for _____ person(s). Cancellations received until 16 days prior to departure—\$25pp fee. No refunds for cancellations received less than 16 days before departure. Please note health or mobility restrictions. If you require physical assistance, you must travel with a companion who will help you. Please make checks payable to: **CELEBRATION TOURS II**.

Name: _____ Home Phone: _____ Cell: _____

Address: _____ City: _____ State: _____ Zip: _____

Name of Companion: _____ Special Needs?: _____

Emergency Contact: _____ Home: _____ Cell: _____

Waiver Fee: ☐ Yes, \$10pp enclosed ☐ No, thank you

Please charge \$_____ to my ☐ MasterCard ☐ VISA. Card number: _____

Expires: _____ Print name as on card: _____ Signature: _____

Billing Address: _____ Phone: _____

* Note: Convenience fee of 3% on all credit/debit card transactions.

COAST GUARD HILL

VOLLEYBALL

- We have two beach volleyball courts available for anyone sunset to sundown. Get a group together and come down to play anytime!

WOOD FOR WARMTH

- If you are having difficulty heating your home this winter, stop by the Recreation Office and help yourself to some of the wood we have by our shed. The wood is for the personal use of Marshfield Residents. Remember to think of others when you are taking some wood.
- If you would like to contribute to this program please contact our office (781) 834-5543.

Community Garden

WHO: Adults / Families
WHEN: Spring/Summer 2019
WHERE: Recreation Center, 900 Ferry Street
FEE: \$20.00 per plot
STAFF: Volunteer Coordinator Wanted

ADDITIONAL INFORMATION:

Marshfield Recreation offers residents of all ages a seasonal Organic Community Garden. The Community Garden consists of 14 raised beds of varying sizes.

Community Green House

WHO: Adults / Families
WHEN: Seasonally
WHERE: Recreation Center, 900 Ferry Street
FEE: FREE!
STAFF: Volunteer Coordinator Wanted

ADDITIONAL INFORMATION:

Marshfield Recreation offers residents of all ages a seasonal Hoop Hut Green House. This 12x15 foot building is ready for volunteer use. Extend your growing season with our Community Green House. This spring we will look to establish an informal Gardening Club.

Marshfield Recreation

EASTER EGG HUNT!

SATURDAY, APRIL 20TH 10AM

@

COAST GUARD HILL (900 FERRY STREET)



FREE COMMUNITY EVENT!

ALL CHILDREN AGE 7 AND UNDER ARE ALLOWED TO PARTICIPATE!

Bring the whole family to see the Easter Bunny and have a fun time!

Contact the Recreation Department (781) 834-5543 with any questions!

Peter Igo Park!

- Late May/Early June we will look to form volleyball, basketball, and bocce leagues.
- Currently we believe we have a bocce commissioner and looking for a volunteer(s) to oversee volleyball and basketball leagues.
- The park is receiving club 2 **AAU** status and will be able to run a sanctioned **AAU** volleyball tournament. Stay tuned for details.
- Meanwhile, Green Harbor River Rowing (GHRR) will be busy on the waterfront teaching and training crew. The goal is to eventually have a high school crew team representing Marshfield – Together with GHRR, friends of Peter Igo Park (FOPIP) maintains 4 canoes and 4 kayaks for renters to those interested through Marshfield Recreation Department.
- The 17.5-acre park – An outdoor fitness facility is quite unique and offers the following – canoeing, kayaking, crew, paddle boarding, bocce, volleyball, tennis, fitness stations, full court basketball, street hockey, kiddie play area, off street parking and lights until 9:30 PM.
- An agreement with neighboring DAV allows park patrons the use of the DAV ADA compatible restrooms from 8AM to 8PM.
- The park is maintained by a large group of volunteers who tend to the “housekeeping,” gardening, **The Park Rangers** and overall upkeep and maintenance which GHRR pitches in with daily routines and keeps the waterfront pristine. Our strong relationship with the DPW is always on board for the “heavy lifting,” along with an amazing group of local tradespeople that always lend a hand when asked.
- We encourage those who haven’t seen or used this “diamond in the rough” to come on down and experience this amazing piece of town owned property.

MARSHFIELD TENNIS CLUB OFFERINGS:



UNIVERSITY OF TENNISOLGY SUMMER 2019



Lesson Schedule & More

Red Ball/Orange Ball
Monday - Thursday (4 days)*
8:30-9:30 Players ages 4-6
9:30-10:30 Players ages 7-10
Cost: \$75/player per week



Green Ball/Regulation Ball
Monday - Thursday (4 days)*
10:30 - 12:00 Tweens & Teens
Cost: \$100/player per week

*Make up classes held on Friday mornings
Lessons Offered The Following Weeks:

June 24 - June 27

July 1 - July 5

No session on Independence Day

July 8 - July 11

July 15 - July 18

July 22 - July 25

July 29 - August 1

Additional weeks may be offered upon request

**Red Ball/Orange Ball
Challenge**
Saturdays Only
June 8th-Aug. 12th
9am-10am ages 4-8yrs
10am-11am ages 9yrs+
Cost \$10/per session



Wheelchair/Adaptive tennis will be arranged upon request

Masters Tennis (for Seniors) Fridays at 9am - 10:30am, May 10th - Sept 27th



FAST 4 “An Aussie Thing” Begins May 14th, Tuesdays 5:30pm - 7:00pm, 4 week session, \$60

Additional weeks may be offered upon request

See www.marshfieldtennis.com for more info and to register

CANOE & KAYAK RENTALS

@

Peter Igo Park

Who: Adults & Children (Anyone under the age of 18 must be with an adult)

When: Spring, Summer, Fall

Where: Peter Igo Park

Fee: \$20 per canoe / per day (2 person canoes)

\$20 per kayak / per day (1 person kayak)

How to rent a canoe:

- People interested in renting a canoe or kayak must contact Dan McDonald (Green Harbor River Rowing) ghrrowing@gmail.com

All participants must fill out a waiver in order to rent a canoe or kayak. People under the age of 18 must be accompanied by an adult and a parent must sign their waiver. Waiver can be found here:

<https://waiver.smartwaiver.com/w/5c49fa9b55883/web/>

- Payments can be made in person on the day you rent. (Please bring cash or a check made out to the town of Marshfield)
- We supply everything you need (canoe, kayak, paddles, and PFD's).

COMING SOON:

Adult Pickleball

Youth & Adult Tennis

Future Stars Basketball (K-2nd Grade)

Volleyball (Middle School Girls)

Street Hockey

CPR/First Aid Certification Classes

Concerts on the Town Green

6 vs 6 HS Girls Soccer

Additional Trips



South Shore Pickleball

PICKLEBALL TOURNAMENT

SATURDAY, APRIL 27TH

MARSHFIELD HIGH SCHOOL TENNIS COURTS

Organized by South Shore Pickleball and Marshfield Recreation Department

- Play begins at 9 am
- 36 Teams (12 Intermediate (3.0 - 3.5)*, 12 Advanced Intermediate (3.5 - 4.0)*, 12 Advanced (4.0+)* (* self-ranked). Please register in the flight of the highest ranked player on your team.
- Mixed Doubles (no exceptions)
- Triple Elimination Blind Draw, First Team to 15 by 1
- Refreshments & Prizes
- Online registration only. See southshorepickleball.com
- Register by April 13th for FREE logo'd T-Shirt per player
- \$25/player (must register as a team)

SPONSORS



picklepower.com



polarbeverages.com



selkirk.com



sportworksduxbury.com

Adopt-A-Seedling Sale

May 18th 10 —2 pm

Marshfield Agricultural Commission's Annual FUNd-raiser *inside the Marshfield Farmers' Market at the Fairgrounds*

Commission members organically grow items, the Marshfield "born and raised" seedlings are up for "adoption" for a donation of your choice!

- ⇒ Flowers, Veggies, Herbs, Fruits, Cuttings and Divisions too
- ⇒ Many hard to find heirloom varieties
- ⇒ New this year! Sweet Potatoes, Lavender, Celery, Strawberries
- ⇒ PLUS gardening advice and community garden plot information

@MarshfieldAgCom

Free Kids' Activities

Free Parking / Admission

Live Music

All local farmers, chefs and select artisans

Café area

Enjoy Your Community Year-Round Farmers' Market



Free!

10 am - 2 pm

Saturdays:

Apr 20

May 18

1 pm - 5 pm

Every Friday

starting May 31 thru Oct 4

Marshfield Fairgrounds



@MarshfieldFM

MarshfieldFarmersMarket.org

Marshfield Recreation Facilities & Youth Sport Organizations

PETER IGO PARK

LOCATION: Marshall Avenue & Dyke Road
FACILITIES: Improvements continue to be made. Individuals may enjoy tennis, basketball, street hockey, access to the Green Harbor River and more!

TOWER AVENUE PARK

LOCATION: Colonial Road & Tower Avenue
FACILITIES: Picnic tables, T-ball field, swings, open field, basketball court, merry-go-round and bike rack.

STREET HOCKEY / BASKETBALL COMPLEX

ADAM KELER RINK / BARROWS/LOPES COURTS

LOCATION: Forest Street & Furnace Street
FACILITIES: Two basketball courts, one street hockey rink. Picnic tables and bleachers

BROOKS THOMSEN SINGER MEMORIAL PLAYGROUND

LOCATION: Old Main Street at the fire station
FACILITIES: Bike rack, 1/2 basketball court, picnic tables, open field, play structure, swings.

UNCLE BUD SKATE PARK

LOCATION: Webster Street & Ocean Street
FACILITIES: Skate Park is open!

COAST GUARD HILL

LOCATION: 900 Ferry Street
FACILITIES: Home of the Marshfield Recreation Department. Basketball courts, sand volleyball courts, open field / hill, horse shoe courts, Community Garden, walking trails, picnic area. Dogs are welcome with responsible owners. Dogs must be on a leash. Owners must pick up after their dog (s). CGH is open to the public from dawn to dusk, unless there is a recreation meeting /program offered.

Security cameras monitor grounds 24/ 7

MARSHFIELD COMMUNITY PLAYGROUND

LOCATION: Library Plaza
FACILITIES: Accessible playground for all abilities, age 3-12.

MARSHFIELD RECREATION LIBRARY PLAZA ROOM

LOCATION: Library Plaza
FACILITIES: Room used for various recreation programs, meetings, and events

SPORT ORGANIZATIONS

PLEASE CLIP AND SAVE ME!!!!

The following **volunteer** run organizations provide sports programs for Marshfield residents.

These organizations are not under the jurisdiction of the Recreation Department. The

Recreation Department does not assign practice times to individual teams. We issue the permit to the league who in turn assigns fields and practice times. For further information please contact the individuals listed below.

YOUTH FOOTBALL:

www.marshfielddyouthfootball.com

FLAG FOOTBALL:

www.marshfieldflag.com

GIRLS SOFTBALL:

www.marshfieldgirlssoftball.com

YOUTH SOCCER

www.marshfieldsoccer.org

BASEBALL & T-BALL:

www.marshfielddyouthbaseball.org

GREEN HARBOR TENNIS CLUB:

www.greenharbortennis.com

YOUTH CHEERLEADING:

www.marshfielddyouthcheerleading.com

BOYS LACROSSE:

www.marshfieldlax.com

GIRLS LACROSSE:

www.marshfieldgirlslax.com

MARSHFIELD TENNIS CLUB:

www.marshfieldtennis.com

FURNACE BROOK FARM:

www.furnacebrookfarm.com

WHIDDEN SCHOOL OF FITNESS:

www.whiddenschool.com

MARSHFIELD YOUTH BASKETBALL:

www.marshfielddyouthbasketball.com

HOT SHOTS SOCCER:

www.hotshotsoccer.org

MARSHFIELD FLAGFOOTBALL:

www.marshfieldflag.com

COASTAL STARS YOUTH HOCKEY:

www.coastalstarsyouthhockey.com

MARSHFIELD RECREATION DEPARTMENT

900 Ferry Street, Marshfield, MA 02050

781-834-5543

E-mail: Marshfieldrecreation@townofmarshfield.org

Program Registration Form

Program Name: _____

Program Date & Time: _____

Amount Due: _____

Participants Name: _____

Grade: _____ Date of Birth: _____ Gender: M / F

Address: _____

Home Phone: _____ Cell Phone: _____

Email: _____

Emergency Contact Name: _____

Home Phone: _____ Cell Phone: _____

Registration is Available:

In Person— 900 Ferry Street, Coast Guard Hill (Pay with cash or check)

By Mail- Mail to 900 Ferry Street, Marshfield, MA 02050 (pay with cash or check)

Online- https://www.activityreg.com/ClientPage_t1.wcs?clientid=MARSH&siteid=1

Please make check out to the "Town of Marshfield"

Office Use Only:

Received by:

Date received:

Cash:

Check #:

Amount:

FOR MORE INFORMATION PLEASE CONTACT:

Craig Jameson, Recreation Director

cjameson@townofmarshfield.org

Recreation Office-(781) 834-5543